

UNIVERSITY *of* WASHINGTON

DATA GOVERNANCE INFO-SESSION

October 12, 2021



AGENDA

1. Overview of UW's Data Governance & Data Stewardship models
2. Work, to date
3. Updates from the Data Domain Council Chairs
4. Q&A



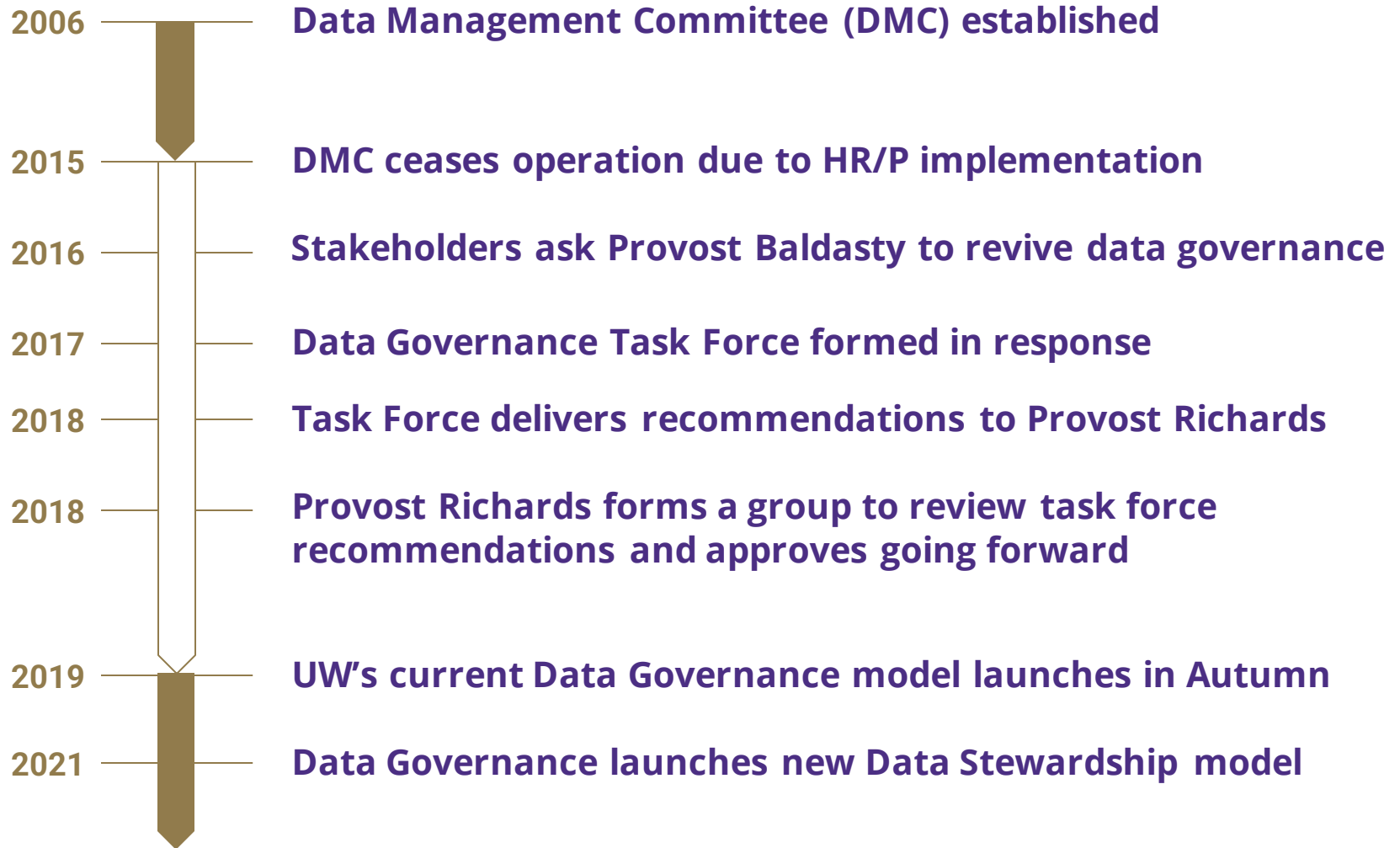
UNIVERSITY *of* WASHINGTON

RE-ENVISIONING DATA GOVERNANCE

Fall 2019-present



BRIEF HISTORY: UW DATA GOVERNANCE



UW DATA GOVERNANCE STRUCTURE

Data Governance
Scope: Academic, Research Administration, and Business Data

Collaboratively Building and Empowering Existing Resources

Steering Committee

- Charged by the President and Provost to:
- Prioritize high level outcomes based on priorities across the institution
 - Develop strategy related to multiple areas of data
 - Reconcile competing priorities across UW units
 - Create accountability for outcomes

Operational Committee

- Charged by the President and Provost to:
- Execute on strategy
 - Intake, prioritize, and identify shared solutions to systemic problems
 - Collaborate or liaise with the Steering Committee and other groups
 - Charge task force(s) to research, analyze, and assess solutions
 - Support outreach and education

Task Forces

- Charged by the Operational Committee if/when needed to:
- Analyze and propose solutions for operational committee initiatives

Related Governance Groups

Maintain strong relationships with related governance groups and processes.

Data Trustees & Custodians

Continue existing responsibilities and engage in cross-domain work.

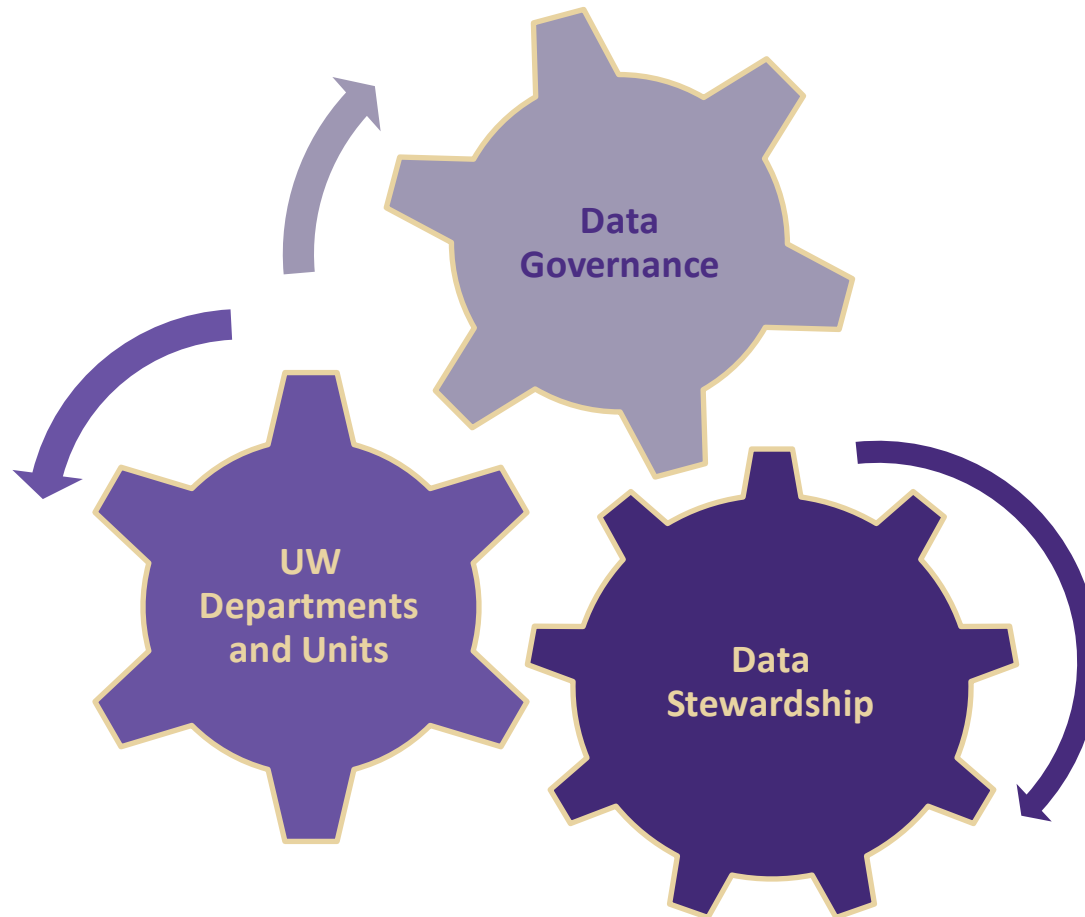
Existing Working Groups & Communities

Elevate and promote value added initiatives.



ROLES AND RESPONSIBILITIES

BETWEEN DATA AND PROCESS PARTNERS



UNIVERSITY *of* WASHINGTON

RE-ENVISIONING DATA GOV AND STEWARDSHIP



RE-ENVISIONING DATA STEWARDSHIP

Work, to date

- ✓ **Gathered input on the previous model and ideas for future state** from Data Custodians and the DG Operational Committee
- ✓ **Conducted benchmarking** with Higher Education, Industry, and Research and Consulting Groups
- ✓ **Developed a new model** in which data stewards form six data domain councils with close ties to DG committees
- ✓ **Launched first two data domain councils** (Finance & HR)

In Progress

- > **Launching remaining data domains** (Advancement, Academics, Research, Property and Space Management)
- > **Domains prioritizing initial work** (often FT related)



NEW UW DATA GOV AND STEWARDSHIP MODEL

Stewardship

“Accountability and responsibility for data and processes that ensure effective control and use of data assets... to help an organization get value from its data.”¹

Governance

“[T]he exercise of authority and control (planning, monitoring, and enforcement) over the management of data assets”¹

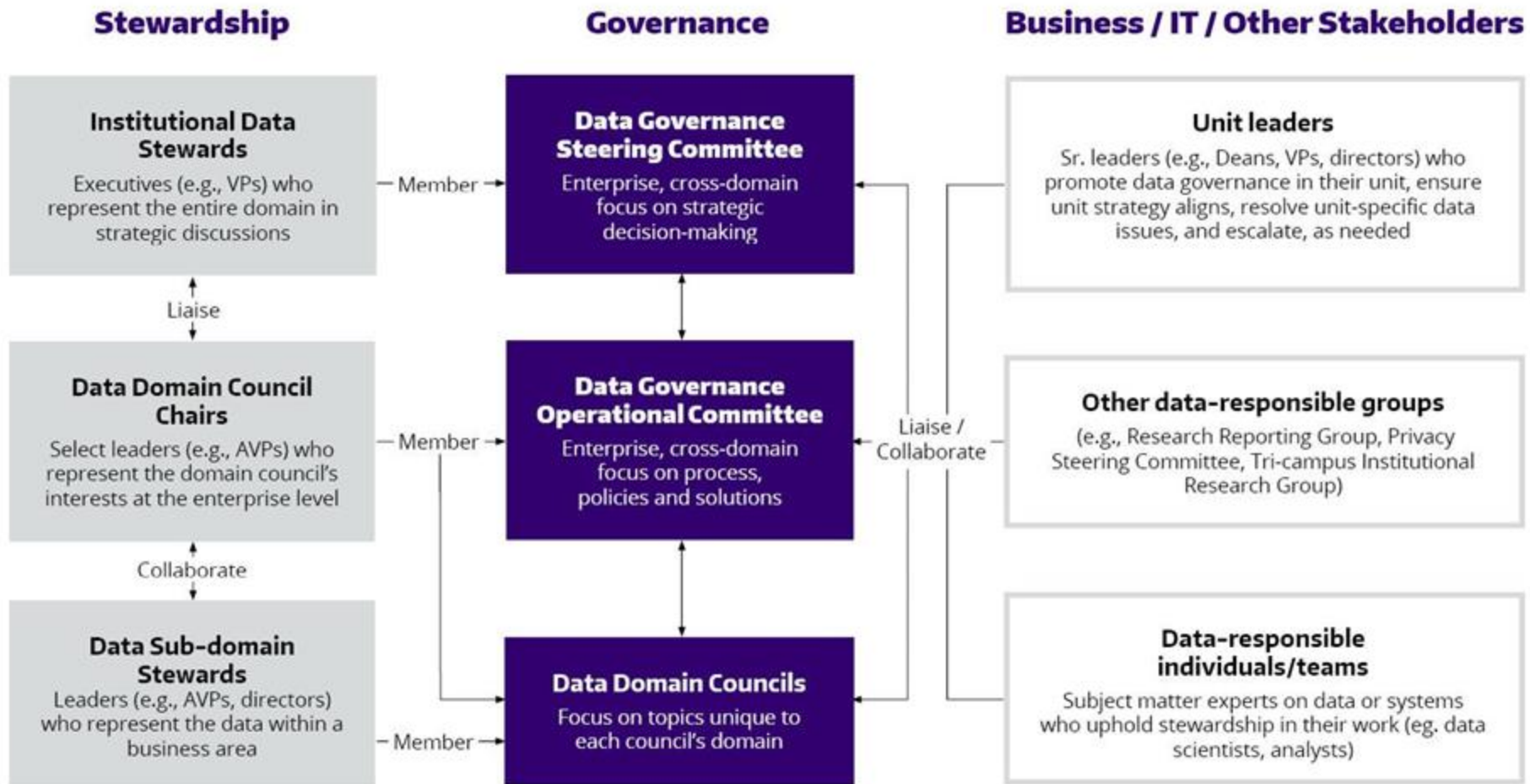
Data Management: Business /IT Stakeholders

“[T]he development, execution, and supervision of plans, policies, programs, and practices that deliver, control, protect, and enhance the value of data and information assets throughout their lifecycles.”¹

¹ *Data Management Body of Knowledge*



NEW UW DATA GOV AND STEWARDSHIP MODEL



UNIVERSITY *of* WASHINGTON

WORK, TO DATE

W

WORK COMPLETED

- ✓ **Laid the foundations for data governance work**
 - ✓ assessed past DMC work to see what needed to be sunset, handed off, or addressed by data governance
 - ✓ drafted a maturity model and assessed UW's data maturity, overall
 - ✓ established an organizational change management approach, intake process, and hallmarks of success for data governance
 - ✓ identified liaisons to related data-responsible groups



WORK COMPLETED

- ✓ **Launched task forces in areas where immediate attention was needed:**
 - ✓ Country Codes
 - ✓ Classification of Instructional Program (CIP) codes
 - ✓ Data Governance/Finance Transformation intersections
- ✓ **Assessed and established a UW approach to Core Data Management**, given that we don't currently have capacity for a golden record system



WORK COMPLETED

CDM Near-term Priorities



Bold: Near-term priorities | *Italic: Priorities for future consideration*

Adaptation of KPMG's Master Data Management framework (<https://www.compact.nl/en/articles/master-data-management-as-a-global-business-service/>) for UW purposes

WORK, GOING FORWARD

Current Projects

- **Continuing to establish stewardship councils**
- **Tackling important Core Data Management issues**
 - Institutional Organization Structure (IOS)
 - Location data



WORK, GOING FORWARD

On deck

- **Prioritizing and tackling emerging issues raised by stakeholders and through our intake process. For example:**
 - Pronouns
 - EDW retention
 - Data access and management model
 - Topics in the backlog for consideration and prioritization

Intake form

- See datagov.uw.edu/about/intake-contact-us/



UNIVERSITY *of* WASHINGTON

UPDATES FROM DATA DOMAIN COUNCIL CHAIRS

**Finance | HR | Advancement | Academics
Research | Property & Space Management**



FINANCE DATA DOMAIN COUNCIL

OVERVIEW

- **Institutional Data Steward: Sarah Norris Hall**, Vice Provost, Office Planning & Budgeting
- **Data Domain Council Chair: Ann Anderson**, Associate Vice President, UW Finance
- **Scope**
- **Current Priorities**
- **On Deck**



HUMAN RESOURCES DATA DOMAIN COUNCIL

OVERVIEW

- **Institutional Data Steward: Mindy Kornberg**, Vice President, Human Resources
- **Data Domain Council Chair: Rachel Gatlin**, Assistant Vice President, HR Benefits, Analytics and Information Systems, Human Resources
- **Scope:** Any data
 - Related to personnel categories outlined in APS 40.1
 - Collected/used/etc. to support personnel's relationship with the University.



HUMAN RESOURCES DATA DOMAIN COUNCIL

CURRENT PRIORITIES

- A generic data sharing agreement/memorandum of understanding for non-standard data requests
- Defining new processes for business partner access approvals
- Financial Transformation project requirements around location, security and data structures
- Supervisory Org Policy

ON DECK

- Partnering with ISC to map supervisory orgs and academic orgs to new IOS



ADVANCEMENT DATA DOMAIN COUNCIL

OVERVIEW

- **Institutional Data Steward: Mary Gresch**, Senior Vice President for University Advancement
- **Data Domain Council Chair: Michael Visaya**, Assistant Vice President for Information Management, University Advancement
- **Scope**
- **Status of Domain Council or Current Priorities**
- **On Deck**



RESEARCH DATA DOMAIN COUNCIL

OVERVIEW

- **Institutional Data Steward: Jim Kresl**, Assistant Vice Provost and Director, ORIS, Office of Research
- **Data Domain Council Chair: Richard Fenger**, Chief Data Strategist for Research, ORIS, Office of Research
- **Scope** (6 sub-domains + **CoreDataMana** to start, Day1)
- **Status of Domain Council or Current Priorities** - Prepare for kick-off!
- **On Deck**



ACADEMIC DATA DOMAIN COUNCIL

OVERVIEW

- **Institutional Data Steward: Phil Reid**, Vice Provost for Academic and Student Affairs and Professor of Chemistry
- **Data Domain Council Chair: Helen B. Garrett**, University Registrar and Chief Officer for Enrollment Information Services, Enrollment Management
- **Scope**
 - **Sub-Domains are data sets, not departments or units**
- **Status of Domain Council or Current Priorities**
 - **Identifying members now**
 - **Many requests queued up to review**



PROPERTY & SPACE MANAGEMENT DOMAIN

NEWLY APPOINTED. NO UPDATES.

- **Institutional Data Steward: Lou Cariello**, Vice President, Facilities
- **Data Domain Council Chair: Kristine Kenney**, Director, Campus Architecture and Planning, and University Landscape Architect, Facilities



INTAKE

UNIVERSAL FOR ALL COMMITTEES AND COUNCILS

Intake Form

Use this form to submit an issue or request to the data governance committees and related stewardship groups. This form helps ensure:

- Departments and units articulate their data governance ideas, inquiries, requests, and/or issues in a clear, comprehensive, and concise manner;
- Data governance committees have consistent, cohesive, and complete information for intaking, evaluating and making informed decision about a request; and
- Communication and feedback processes are transparent to everyone involved in the process.

See datagov.uw.edu/about/intake-contact-us/



UNIVERSITY *of* WASHINGTON

Q&A

W